

● DIABETES CARE

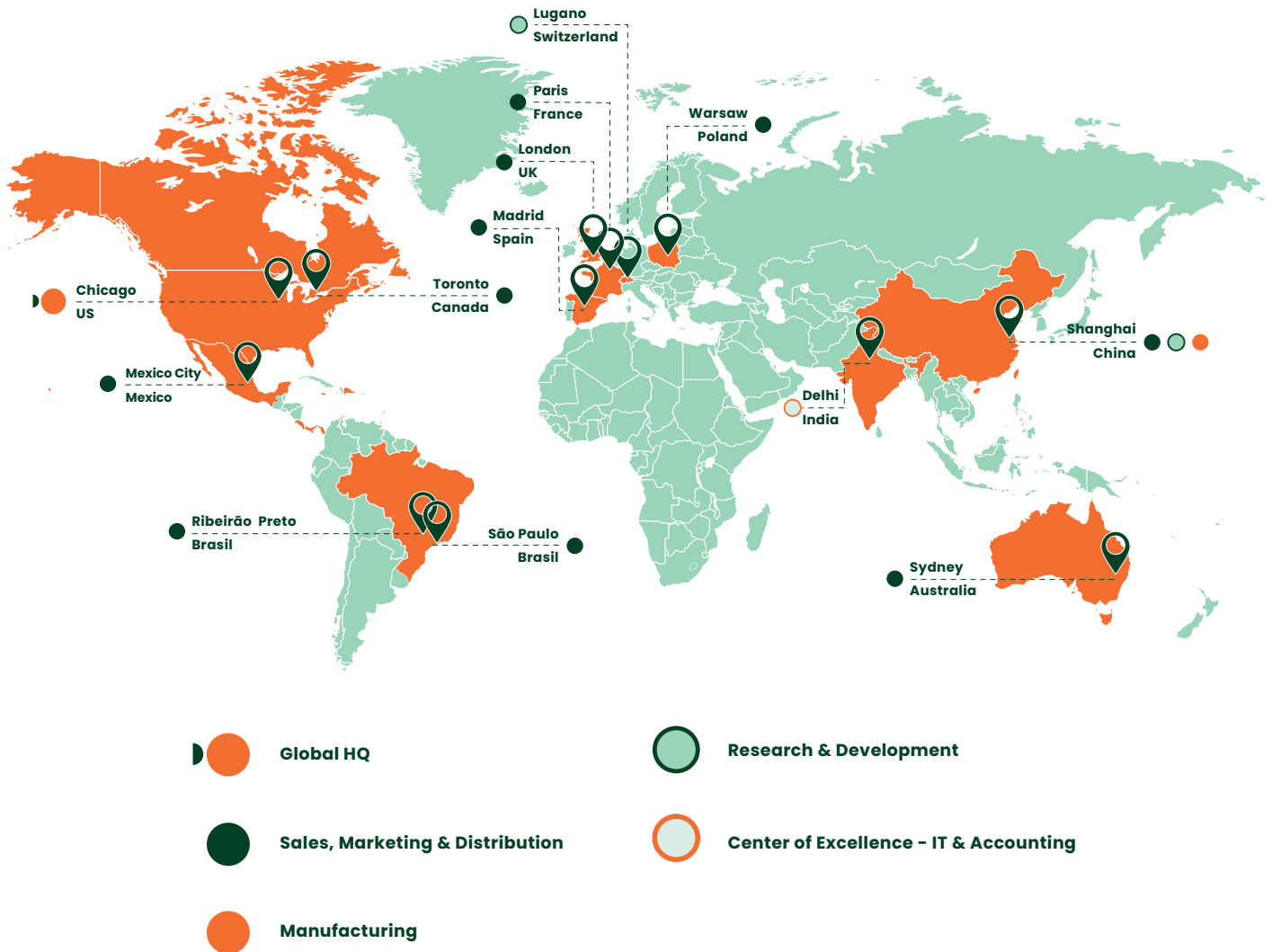


● **SoIM** Building a Healthier Tomorrow

USA CATALOG

Sol-Millennium is a vertically integrated medical supply company with locations across the globe. We are one of the world's largest manufacturers of needles and syringes and have a comprehensive line of medical supplies.

Our innovative technology reduces needlestick injuries, saves on medication expenses and enhances both clinician and patient experience. Our international sales team is dedicated to delivering knowledge and outstanding customer service. Our goal is to work together as partners in the healthcare industry, focusing on a healthier tomorrow.



▶ Table of Contents

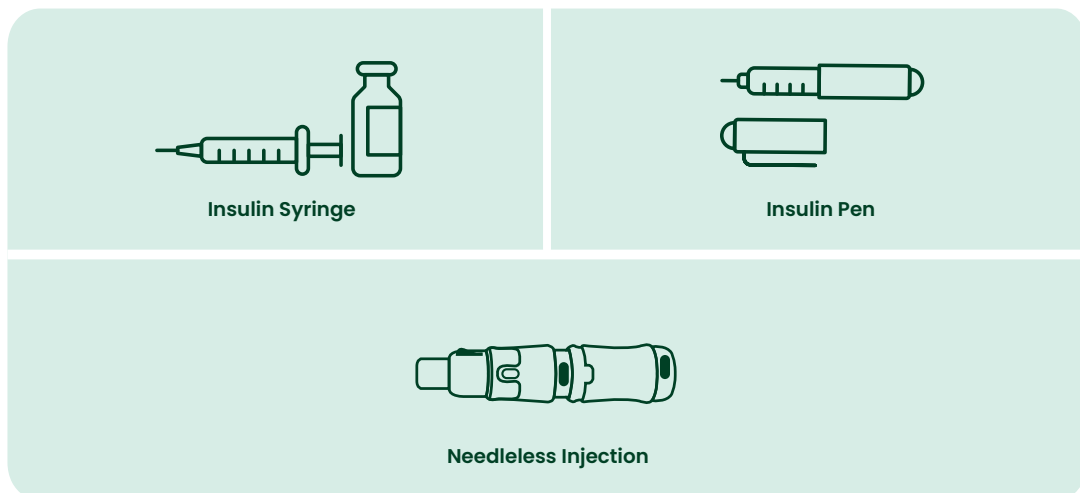
	Diabetes Background	3-4
	Sol-M® Standard Insulin Syringes	5-6
	Sol-Care® Safety Insulin Syringe	7
	Sol-Guard® Safety Insulin Syringe	8
	Sol-Guard® Solo Safety Insulin Syringe	9
	Sol-M® Standard Pen Needle	10
	Sol-M® Lancing Device & Lancets	11
	Sol-Care® Safety Lancets	12
	Sol-M® Sterile Alcohol Swabs	12
	Sol-Vet® Insulin Syringes	13-14

DIABETES OVERVIEW

DIABETES is a long-lasting condition where the body does not produce or use insulin properly. This alters how the body breaks down food and turns it into energy. Diabetes affects nearly 537 million people worldwide with an additional 541 million having pre-diabetes.¹



GLOBAL DIABETES STATISTICS

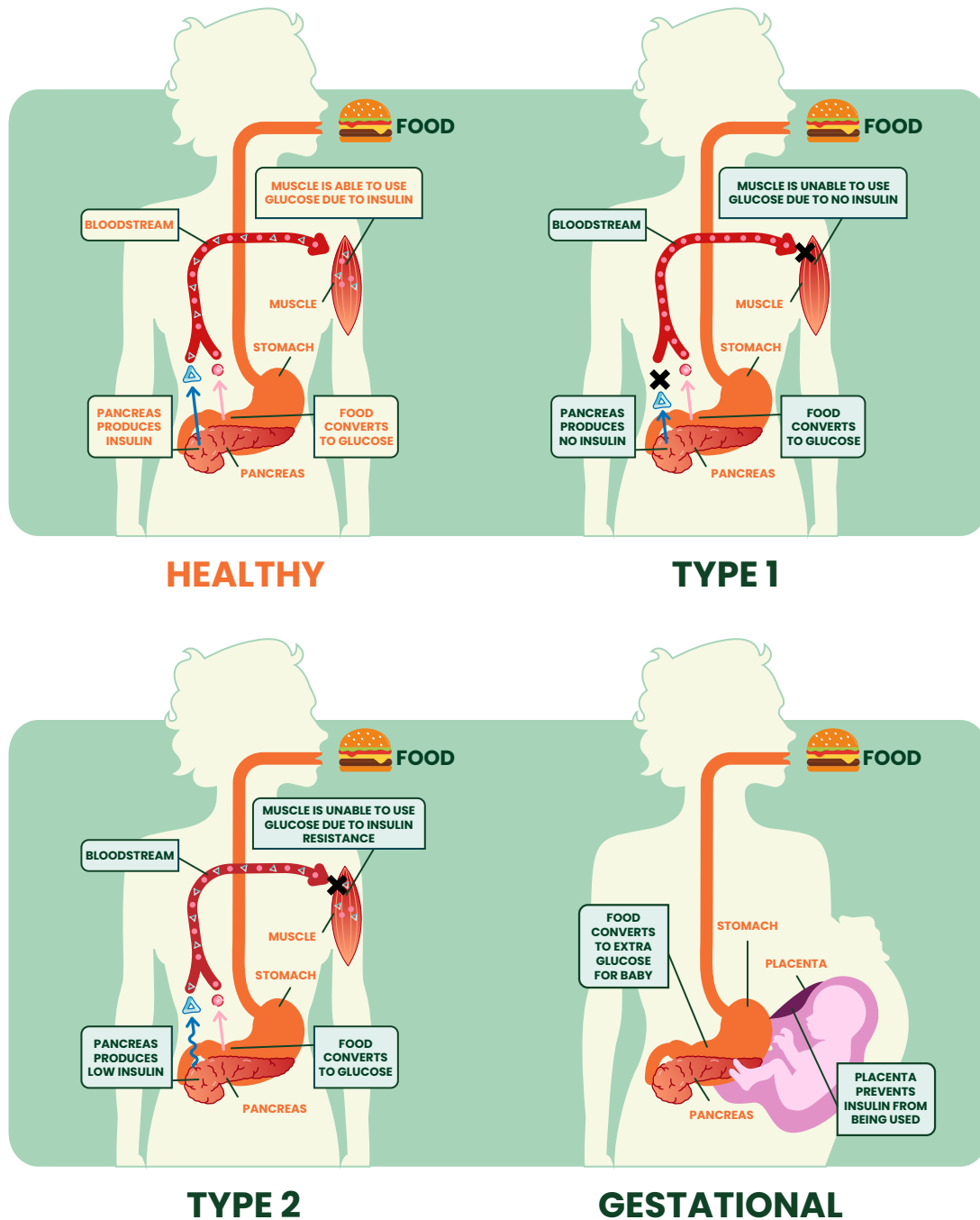


METHODS OF INSULIN ADMINISTRATION

1. "IDF Diabetes Atlas Tenth edition," IDF Diabetes Atlas, <https://diabetesatlas.org/#:~:text=Diabetes%20around%20the%20world%20in%202021%3A,and%20783%20million%20by%202045>. (accessed Nov. 1, 2023).

TYPES OF DIABETES

Type 1 diabetes is autoimmune and typically diagnosed during childhood. It requires daily insulin and accounts for 5-10% of diabetics. **Type 2** diabetes is diagnosed mainly in adults and makes up 90-95% of cases. **Gestational** diabetes occurs during pregnancy but usually resolves itself post pregnancy. Gestational diabetes does pose a heightened risk of type 2 diabetes for the child.²



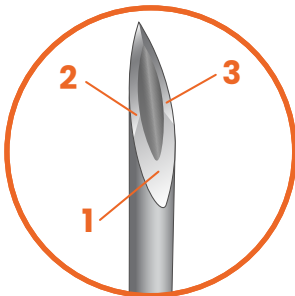
2. "What is diabetes?," Centers for Disease Control and Prevention, 07-Jul-2022. [Online]. Available: <https://www.cdc.gov/diabetes/basics/diabetes.html>. [Accessed: 29-Mar-2023].

Sol-M[®] Standard Insulin Syringe - U100

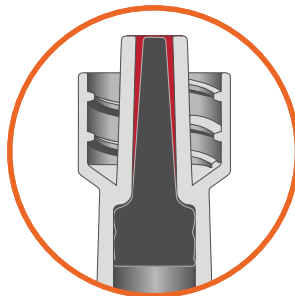


Features:

- Needles are tri-bevel, anti-coring and silicone oil lubricated for a smoother injection
- Low dead space results in over 80% less medication waste compared to the ISO standard for conventional insulin syringes
- Bold, easy-to-read unit markings for accurate dosing
- Large flange offers secure grip and easy medication dispensing
- Thin wall cannulas for easier flow, reducing injection duration



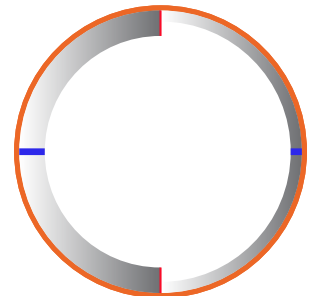
Tri-bevel



Low dead space



Bold unit markings



Thin wall cannulas

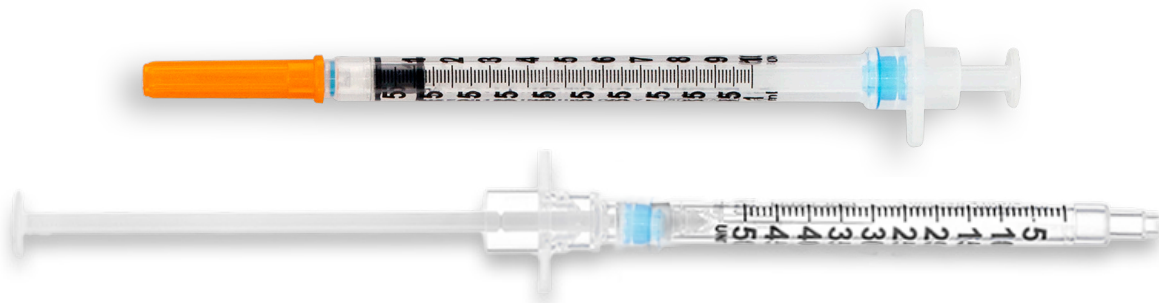
Sol-M® Standard Insulin Syringe - (Blister Pack)

Ref. Number	Volume	Gauge	Needle Length(mm)	Needle Length(in)	Box Qty	Case Qty
1612712	1mL	27G	12.5mm	1/2"	100	800
1612812	1mL	28G	12.5mm	1/2"	100	800
1612851	1mL	28G	8mm	5/16"	100	800
1612912	1mL	29G	12.5mm	1/2"	100	800
1613051	1mL	30G	8mm	5/16"	100	800

Sol-M® Standard Insulin Syringe - (PE Bag - 10pcs)

Ref. Number	Volume	Gauge	Needle Length(mm)	Needle Length(in)	Box Qty	Case Qty
1612712B	1mL	27G	12.5mm	1/2"	100	1,000
1612758B	1mL	27G	16mm	5/8"	100	1,000
1612812B	1mL	28G	12.5mm	1/2"	100	1,000
1612912B	1mL	29G	12.5mm	1/2"	100	1,000
1613012B	1mL	30G	12.5mm	1/2"	100	1,000
1613051B	1mL	30G	8mm	5/16"	100	1,000
1613151B	1mL	31G	8mm	5/16"	100	1,000
161311564B	1mL	31G	6mm	15/64"	100	1,000
1652712B	0.5mL	27G	12.5mm	1/2"	100	1,000
1652812B	0.5mL	28G	12.5mm	1/2"	100	1,000
1652912B	0.5mL	29G	12.5mm	1/2"	100	1,000
1653012B	0.5mL	30G	12.5mm	1/2"	100	1,000
1653051B	0.5mL	30G	8mm	5/16"	100	1,000
165311564B	0.5mL	31G	6mm	15/64"	100	1,000
1653151B	0.5mL	31G	8mm	5/16"	100	1,000
1633012B	0.3mL	30G	12.5mm	1/2"	100	1,000
1633051B	0.3mL	30G	8mm	5/16"	100	1,000
163311564B	0.3mL	31G	6mm	15/64"	100	1,000
1633151B	0.3mL	31G	8mm	5/16"	100	1,000

Sol - Care[®] Safety Insulin Syringe - U100



Features:

- Needle is manually retracted and locked into the syringe barrel to prevent reuse and needlestick injuries
- Plunger is designed to be snapped off for more efficient disposal
- Needles are tri-bevel, anti-coring and silicone oil lubricated for a smoother injection
- Low dead space results in less medication waste compared to the ISO standard for conventional insulin syringes
- Bold, easy-to-read unit markings for accurate dosing
- Large flange offers secure grip and easier medication dispensing
- Thin wall cannulas for easier flow, reducing injection duration

Sol-Care[®] Safety Insulin Syringe

Ref. Number	Volume	Gauge	Needle Length(mm)	Needle Length(in)	Box Qty	Case Qty
100071IM	1mL	28G	12.5mm	1/2"	100	1,000
1000171M	1mL	29G	12.5mm	1/2"	100	1,000
1000811M	1mL	30G	12.5mm	1/2"	100	1,000
100021M	0.5mL	29G	12.5mm	1/2"	100	1,000
1000891M	0.5mL	30G	8mm	5/16"	100	1,000

Sol - Guard[®] Safety Insulin Syringe - U100



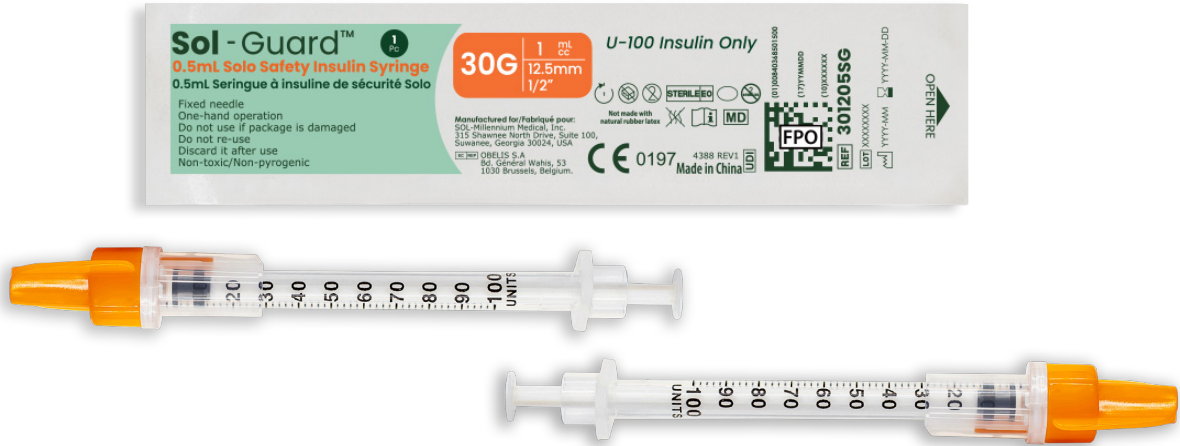
Features:

- Safety shield feature that slides over the needle to prevent needlestick injuries before and after medication delivery
- Audible and tactile click once safety feature is activated, preventing reuse
- Needles are tri-bevel, anti-coring and silicone oil lubricated for a smoother injection
- Low dead space results in over 65% less medication waste compared to the ISO standard for conventional insulin syringes
- Bold, easy-to-read unit markings for accurate dosing
- Large flange offers secure grip and easier medication dispensing
- Thin wall cannulas for easier flow, reducing injection duration

Sol-Guard[®] Insulin Syringe

Ref. Number	Volume	Gauge	Needle Length(mm)	Needle Length(in)	Box Qty	Case Qty
200017SG	1mL	29G	12.5mm	1/2"	100	800
200002SG	0.5mL	29G	12.5mm	1/2"	100	800
200003SG	0.3mL	29G	12.5mm	1/2"	100	800

Sol-Guard[®] Solo Safety Insulin Syringe - U100



Features:

- One handed operation and safety activation
- Safety shield feature that slides over the needle to prevent needlestick injuries after medication delivery
- Audible and tactile click once safety feature is activated, preventing reuse
- Needles are tri-bevel, anti-coring and silicone oil lubricated for a smoother injection
- Low dead space results in less medication waste
- Bold, easy-to-read unit markings for accurate dosing
- Large flange offers secure grip and easier medication dispensing
- Thin wall cannulas for easier flow, reducing injection duration

Sol-Guard[®] Solo Safety Insulin Syringe

Ref. Number	Volume	Gauge	Needle Length(mm)	Needle Length(in)	Box Qty	Case Qty
291210SG	1mL	29G	12.5mm	1/2"	100	800
291203SG	0.3mL	29G	12.5mm	1/2"	100	800
291205SG	0.5mL	29G	12.5mm	1/2"	100	800
301205SG	0.5mL	30G	12.5mm	1/2"	100	800
301210SG	1mL	30G	12.5mm	1/2"	100	800
3151603SG	0.3mL	31G	8mm	5/16"	100	800
3151605SG	0.5mL	31G	8mm	5/16"	100	800
3151610SG	1mL	31G	8mm	5/16"	100	800

Sol-M[®] Standard Pen Needle



Features:

- Needles are tri-bevel, anti-coring and silicone oil lubricated for a smoother injection
- Thin wall cannulas for easier flow, reducing injection duration
- Electropolished to remove blemishes
- Compatible with most injector pens

Sol-M[®] Standard Pen Needle

Ref. Number	Gauge	Needle Length(mm)	Needle Length(in)	Box Qty	Case Qty
PN311564	31G	6 mm	15/64"	100	5,000
PN31316	31G	5 mm	3/16"	100	5,000
PN31516	31G	8 mm	5/16"	100	5,000
PN32532	32G	4 mm	5/32"	100	5,000
PN33532	32G	4 mm	5/32"	100	5,000

Sol-M[®] Lancing Device & Lancets



Features:

- 6 settings for accurate depth puncture
- Red visual indicator confirms when lancing device is ready to use and loaded
- Compact design with comfortable grip
- Works with most general lancets

Sol-M™ Lancing Device

Ref. Number	PE Bag	Case Qty
LAD001	1	150

Features:

- Tri-bevel cut cannula generates proper blood sample size
- Needle is equipped with a protective cap for increased safety and easier placement
- Fits almost all lancet devices



Sol-M[®] Standard Lancets

Ref. Number	Gauge	Box Qty	Case Qty
LAN001	30G	100	5,000
LAN002	28G	100	5,000
LAN003	33G	100	5,000

Sol-Care[®] Safety Lancets



Features:

- Pressure activated technology minimizes misfiring and gently controls penetration depth
- Needle retracts automatically and locks out for safety, protecting against accidental cuts and reducing the chance of cross-contamination

Sol-Care[®] Safety Lancet

Ref. Number	Gauge	Length(mm)	Box Qty	Case Qty
SLA001	30G	1.6 mm	100	1,000
SLA004	28G	1.8 mm	100	1,000
SLA005	23G	1.8 mm	100	1,000
SLA008	31G	1.8 mm	100	1,000

Sol-M[®] Sterile Alcohol Swabs

Features:

- 70% isopropyl alcohol
- Individually wrapped
- Durable wrapper



Sol-M[®] Sterile Alcohol Swabs

Ref. Number	Description	Size	mm	Box Qty	Case Qty
SIA1001	Sterile Alcohol Swabs	Medium	30mm x 30mm	100	10,000

Sol - Vet[®] Insulin Syringes



Features:

- Needles are tri-bevel, anti-coring and silicone oil lubricated for a smoother injection
- Syringes require less penetration force, resulting in greater animal comfort
- Low dead space results in over 90% less medication waste compared to the ISO standard for conventional insulin syringes
- Bold, red unit markings to indicate U40 insulin syringe with half unit options available for accurate dosing, U100 is indicated by orange cap
- Large flange offers secure grip and easier medication dispensing

Sol-Vet[®] Insulin Syringes U-40 (PE bag - 10pcs)

Ref. Number	Volume	Gauge	Needle Length (mm)	Needle Length (in)	Box Qty	Case Qty
V12905-40	1 mL	29G	12mm	1/2"	100	1,000
V1305-40	1 mL	30G	12mm	1/2"	100	1,000
V5295-40	0.5 mL	29G	12mm	1/2"	100	1,000
V5305-40	0.5 mL	30G	12mm	1/2"	100	1,000
V32905-40	0.3 mL	29G	12mm	1/2"	100	1,000
V3305-40	0.3 mL	30G	12mm	1/2"	100	1,000



Sol - Vet[®] Insulin Syringes



Sol-Vet[®] Insulin Syringes U-100 (PE Bag - 10pcs)

Ref. Number	Volume	Gauge	Needle Length(mm)	Needle Length(mm)	Box Qty	Case Qty
V12905	1 mL	29G	12.5mm	1/2"	100	1,000
V1305	1mL	30G	12.5mm	1/2"	100	1,000
V5295	0.5 mL	29G	12.5mm	1/2"	100	1,000
V5305	0.5 mL	30G	12.5mm	1/2"	100	1,000
V3295	0.3 mL	29G	12.5mm	1/2"	100	1,000
V3305	0.3 mL	30G	12.5mm	1/2"	100	1,000



NACA-MTP-582-0923 © Sol-Millennium Medical Inc, 2024. All rights reserved. Sol-Millennium, the Sol M logo, type and all other trademarks are, if nothing else is stated or is evident from the context in a certain case, trademarks of Sol-Millennium Medical Inc. Please refer to solm.com/trademarks for more information. Product images are not necessarily to scale. All product images are for illustration purposes only and may not be an exact representation of the product. Disclaimer: Some products may not be regulatory cleared/released for sale in all markets. Please contact the local Sol-Millennium sales office for current product assortment and availability. See Instructions For Use for full information, including indications, contraindications, warnings and precautions.